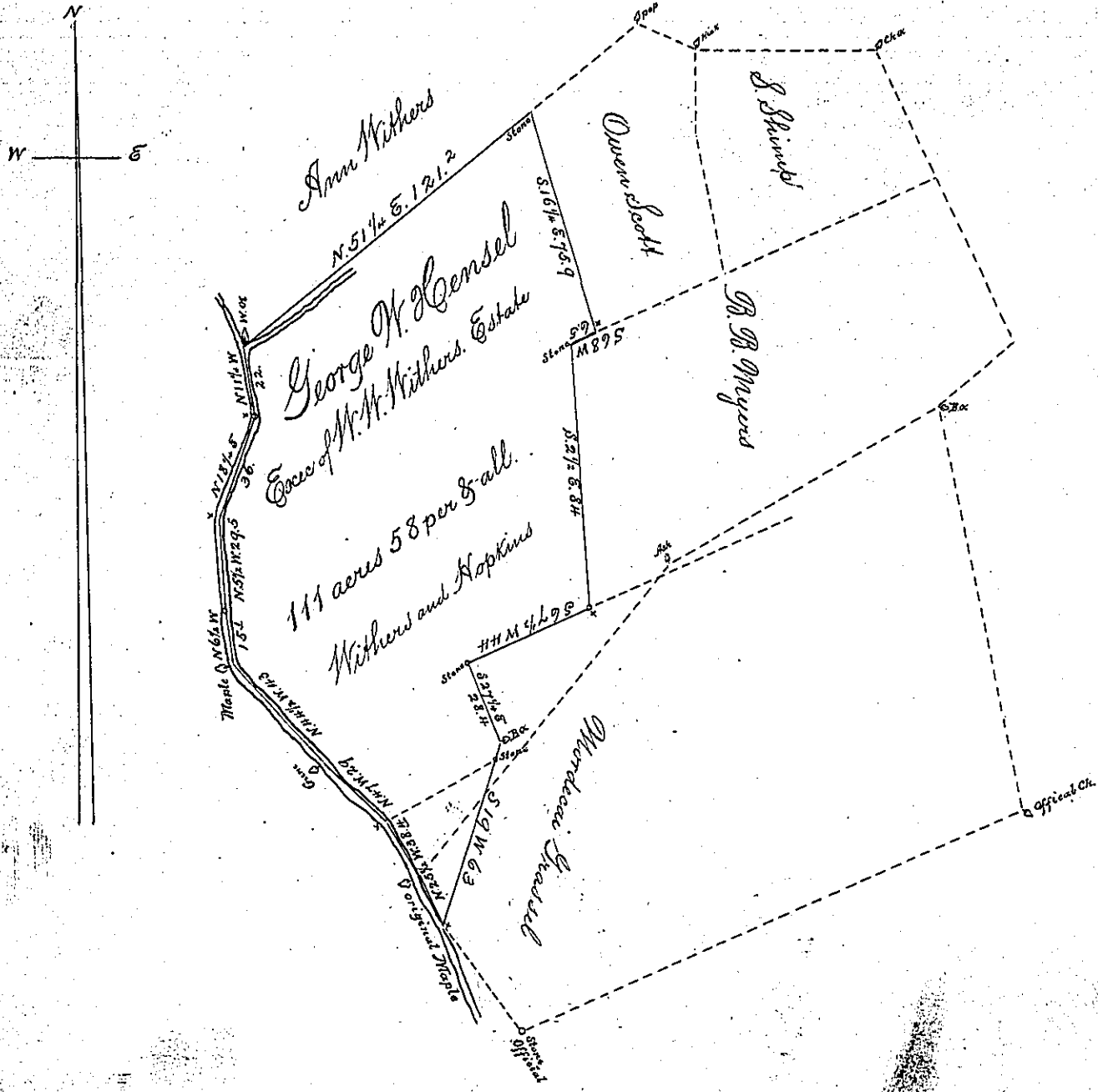


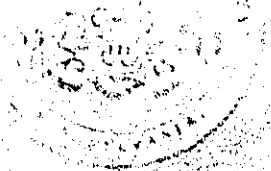
See - A-54-115
C-66-73
C-57-191-195
D-75-50
B-14-150



The above draft represents a tract of land situate in Eden township Lancaster County containing one hundred and eleven acres and fifty eight perches with allowance of six per cent for roads &c. It being the northwestern part of a tract originally granted by Warrant December 2nd 1734 to John Douglass And afterwards by Warrant June 9th 1790. Surveyed and returned for Frederick Penstermacher and said to contain 339 acres and 91 perches & allow the 111 acres and fifty eight perches to be ^{parted} to the heirs of James Hopkins, Dec. and George W. Hensel, Executor of the Estate of William W. Withers Dec. Approved March 11th 1889.

E. H. Burkhole
Co. Surveyor

IN TESTIMONY that the above is a copy of the original remaining on file in the Department of Internal Affairs of Pennsylvania, made conformably to an Act of Assembly approved the 16th day of February, 1833, I have hereunto set my Hand and caused the Seal of said Department to be affixed at Harrisburg, this
Seventh day of April 1893.



James W. Latta
Secretary of Internal Affairs.